

# California Montessori Project Shingle Springs Campus



## School Accountability Report Card

Data From the 2006-2007 School Year  
Published During 2007-2008

**Gary S. Bowman, M.S. Ed.**  
Executive Director

### Executive Director's Message

California Montessori Project (CMP) is a public charter school network (K-8) operating under four charters, authorized by Buckeye Union, Elk Grove Unified, Sacramento City Unified and San Juan Unified School Districts. CMP has five sites throughout the greater Sacramento, California region, including campuses at Shingle Springs, Elk Grove, mid-town Sacramento, Fair Oaks, and Carmichael.

The Montessori philosophy states that a child has an innate desire to learn and produce purposeful, meaningful work. Dr. Maria Montessori believed that the role of an adult in a child's education is to provide an appropriate environment, complete with tools and methods, to facilitate the child's own discovery of knowledge and skills at the time when it has the most impact for him/her as an individual. This system has a foundation in trust and respect of the individual, and a belief that children will soar beyond traditional expectations.

California Montessori Project offers an environment which has the tools, programs, resources, and support to enable students to become educated to high international academic standards, and to develop themselves to their fullest capacity as competent, happy, productive individuals, family members, workers, and contributors to a better society and a peaceful world. This is achieved through a strong commitment from the community: parents, teachers, community groups, the legislature and, most importantly, the individual child. CMP is grounded in a philosophy of trust in individuals to seek their greatest potentials.

CMP holds that an educated person is well-rounded and balanced. The CMP student shall become a collaborative member of a community, motivated to set and achieve high goals. CMP encourages students to demonstrate empathy towards others through respectful and productive communications. The student is guided to view him/herself as a global citizen who is empowered, and responsible, for making positive changes in the world and within the immediate environment. The CMP student develops personal habits leading to a healthy lifestyle which include balancing leisure, work, family, and community.

While recognizing that the traditional system meets the needs of many, CMP offers an option where students work in multi-age classrooms, with individual learning plans of instruction and materials which are progressive, and frequently self-correcting.

### Principal's Message

The California Montessori Project, Shingle Springs Campus is a Montessori public charter school offering kindergarten through eighth grade education under a charter authorized by the Buckeye Union School District. We are accredited by the Montessori School Accreditation Commission (MSAC) and have applied for accreditation by the Western Association of Schools and Colleges (WASC). Our program quality is sustained by supporting our California-credentialed and Montessori-trained faculty with continued professional development and quality Montessori materials in low student/teacher ratio classrooms.

We encourage our students to be independent learners and problem solvers. Our students utilize individualized work plans to allow them to work at their own level and pace. Cooperation and positive peer relationships are supported through daily Class Meetings. Respect is strongly emphasized, and reinforced on a daily basis: respect for self, respect for others, and respect of our environment.

Our school is well known for having a climate that cultivates our school community. We have a high level of family involvement as parents and grandparents are encouraged to volunteer in the classroom, participate on field trips, and help organize special events and fundraisers.

*Continued on page 2*



### Shingle Springs Campus

Grades K-8  
4645 Buckeye Road  
Shingle Springs, CA 95682  
Phone: (530) 672-3095  
[www.cacmp.org](http://www.cacmp.org)

**Kim Zawilski**  
Principal

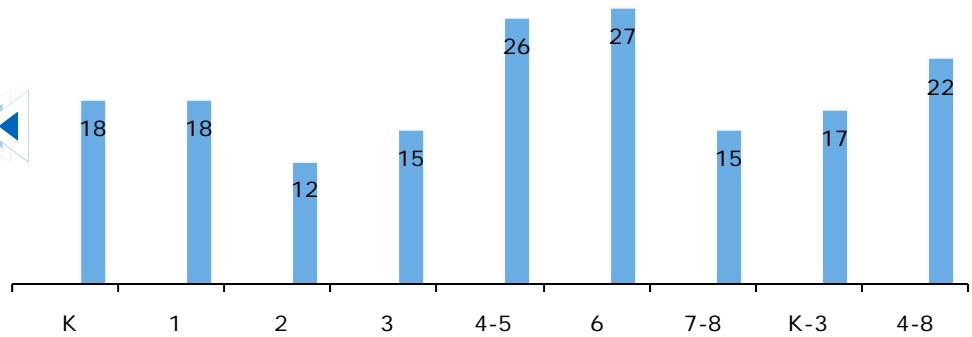
"Our program quality is sustained by supporting our California-credentialed and Montessori trained faculty with continued professional development and quality Montessori materials in low student/teacher ratio classrooms."

# California Montessori Project ■ Shingle Springs Campus

## Class Size

The adjacent chart displays the three-year data for average class size.

■ 04-05 ■ 05-06 ■ 06-07



## Principal's Message

*Continued from page 1*

These opportunities for active participation benefit our students as they gain the sense that their education is important to their family members. Families also get to know one another and operate as a community during numerous school-wide events such as our annual Spring Luau, Science Fairs, Continent Parties, Watch Me Work Nights, art shows, drama performances, pancake breakfasts, and other special events.



## Enrollment and Demographics

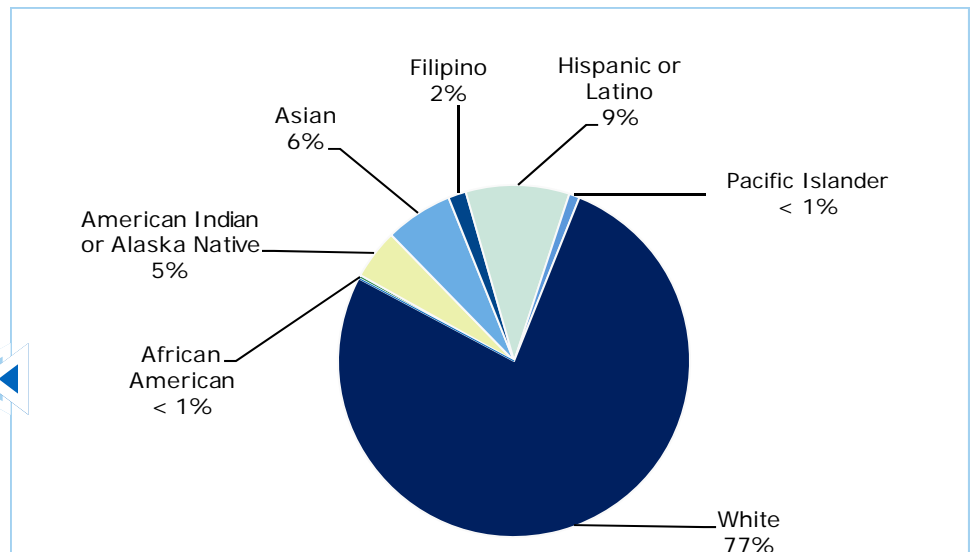
The total enrollment was 305 students for the 2006-07 school year.

Class Size Distribution — Number of Classrooms By Size									
Grade	2004-05			2005-06			2006-07		
	1-20	21-32	33+	1-20	21-32	33+	1-20	21-32	33+
K	◆	◆	◆	◆	◆	◆	2		
1	◆	◆	◆	◆	◆	◆	2		
2	◆	◆	◆	◆	◆	◆	3		
3	◆	◆	◆	◆	◆	◆	3		
4	◆	◆	◆	◆	◆	◆		3	
5	◆	◆	◆	◆	◆	◆		3	
6	◆	◆	◆	◆	◆	◆		1	
7	◆	◆	◆	◆	◆	◆	1		
8	◆	◆	◆	◆	◆	◆	1		

◆ California Montessori Project, Shingle Springs Campus, was authorized by Buckeye USD in 2006. This SARC does not reflect data prior to BUSD sponsorship.

## Professional Development Days

CMP has five days each year dedicated to staff and professional development.



# California Montessori Project ■ Shingle Springs Campus

## School Facilities

The CMP Shingle Springs Campus was purchased by CMP in 2005. The school is located in a rural setting on five acres. The campus is configured with eight fixed and portable classrooms that are either owned by the school or on a lease/purchase agreement. We also have administrative offices, a resource room, a room dedicated to before and after school care, and a conference room/teacher lounge. The oldest building on campus was built in 1995 and all of the other buildings were added after that. The buildings are in very good condition and are maintained on a daily basis by our custodial and maintenance staff.

The five-acre parcel allows us to have extensive room for an outdoor amphitheatre, an athletic field, basketball courts, playground structures, as well as multiple gardens for our Garden of Learning program. There is also a cross-country path that has been carved out for our physical education program.

Custodial and maintenance services are provided through contractual services, as well as paid staff. Additional site improvement activities are provided by paid staff members, subcontractors, and parent volunteers.

The Shingle Springs campus will be equipped with a new Middle School complex for the fall of 2007. This complex will provide us with enough space to accommodate our maximum Middle School enrollment in the coming years. The campus will be growing by one additional classroom in the fall of 2008 in order to accommodate the movement of students through our program. In addition, a small outdoor lunch area will be added and our playground structures will be expanded.

## Textbooks and Instructional Materials

Montessori curriculum and materials used at the CMP Shingle Springs Campus are aligned with the California State Standards. We also use State-adopted texts and materials where needed to complement the Montessori materials.

Quality and Availability of Textbooks	
Subject	Textbook
Language Arts	Open Court, Modern Curriculum Press, Houghton Mifflin: English, Primary Phonics
Mathematics	Harcourt Math
Mathematics	McDougal Littell: <i>Algebra I</i> , <i>Algebra I Concepts and Skills</i> , <i>Geometry</i> , <i>CA Middle School Math</i>
Science	Prentice Hall: <i>Science Explorer</i>
Social Science	Houghton Mifflin: <i>From Sea to Shining Sea</i> , <i>This Is My Country</i> , <i>Oh California</i> , <i>America Will Be</i>
Social Science	Teachers Curriculum Institute: <i>History Alive</i>
Social Science	Prentice Hall: <i>History of our World</i>

Note: This data was most recently collected and verified in August 2007.

## Suspensions and Expulsions

Suspension and Expulsion Rates						
	CMP Shingle Springs Campus			Buckeye USD		
	2004-05	2005-06	2006-07	2004-05	2005-06	2006-07
Suspension Rate	◆	◆	1.3%	4.1%	3.6%	3.7%
Expulsion Rate	◆	◆	0.0%	0.1%	0.1%	0.0%

◆ California Montessori Project, Shingle Springs Campus, was authorized by Buckeye USD in 2006. This SARC does not reflect data prior to BUSD sponsorship.

## Public Internet Access

CMP Shingle Springs Campus has three computers available in the Resource Room which provide students and parents with Internet Access when the school is open. In addition, we are installing a Parent Resource Kiosk in our front office where students and parents may access the internet for copies of newsletters, classroom homework, grades, etc.



## Suspensions and Expulsions

The adjacent table shows the rate of suspensions and expulsions for the most recent three-year period.

## California Standards Tests

For the 2007 STAR exam, students in grades 2-8 took an English-language arts and mathematics test. Students in grades 4 and 7 also participated in an essay writing test. History-social science tests were given to students in grade 8 and students in grades 5 and 8 took a science test.

Because tests are meant to measure how well students achieve standards rather than how well they do compared to other students, the results are reported as performance levels. The five performance levels are:

- **Advanced** (*exceeds State Standards*)
- **Proficient** (*meets Standards*)
- **Basic**
- **Below basic**
- **Far below basic**

Students scoring at the Proficient or Advanced level meet State Standards in that content area.

The adjacent tables show the percentage of students that scored at proficient or advanced levels in English-language arts, mathematics, science, and history-social science. For a complete report on all subgroups and their scores by grade level, please visit <http://star.cde.ca.gov/>.



## California Standards Tests Results

The multiple-choice California Standards Tests (CST) are part of the Standardized Testing and Reporting (STAR) and are administered only to students in California public schools. These tests determine students' achievement of the California Academic Content Standards and provide feedback on their success given what they are expected to know in each grade level and subject.

Percentage of Students Scoring At Proficient or Advanced Levels									
	CMP Shingle Springs Campus			Buckeye USD			California		
	04-05	05-06	06-07	04-05	05-06	06-07	04-05	05-06	06-07
<b>English-Language Arts</b>	◆	◆	68%	68%	69%	69%	40%	42%	43%
<b>Mathematics</b>	◆	◆	64%	65%	70%	69%	38%	40%	40%
<b>Science</b>	◆	◆	60%	55%	64%	67%	27%	35%	38%
<b>History-Social Science</b>	◆	◆	50%	65%	70%	70%	32%	33%	33%

◆ California Montessori Project, Shingle Springs Campus, was authorized by Buckeye USD in 2006. This SARC does not reflect data prior to BUSD sponsorship.

## CST Subgroup Results: English-Language Arts, Mathematics, Science, and History-Social Science

Percentage of Students Scoring At Proficient or Advanced Levels				
Subgroup	Spring 2007 Results			
	English-Language Arts	Mathematics	Science	History-Social Science
<b>Male</b>	66%	65%	66%	◆
<b>Female</b>	69%	64%	56%	42%
<b>Economically Disadvantaged</b>	73%	73%	◆	◆
<b>English Learners</b>	◆	◆	◆	◆
<b>Students with Disabilities</b>	43%	30%	◆	◆
<b>Migrant Education Services</b>	◆	◆	◆	◆
<b>African American</b>	◆	◆	◆	◆
<b>American Indian or Alaska Native</b>	◆	◆	◆	◆
<b>Asian</b>	73%	93%	◆	◆
<b>Filipino</b>	◆	◆	◆	◆
<b>Hispanic or Latino</b>	55%	50%	◆	◆
<b>Pacific Islander</b>	◆	◆	◆	◆
<b>White</b>	69%	64%	64%	44%

◆ Scores are not shown when the number of students tested is 10 or less, either because the number of students tested in this category is too small for statistical accuracy or to protect student privacy.

# California Montessori Project ■ Shingle Springs Campus

## Norm Referenced Test Results

Percentage of Students Scoring At or Above the 50th Percentile						
	Reading			Mathematics		
	04-05	05-06	06-07	04-05	05-06	06-07
<b>CMP Shingle Springs Campus</b>	◆	◆	68%	◆	◆	66%
<b>Buckeye USD</b>	69%	71%	72%	75%	78%	80%
<b>California</b>	41%	42%	42%	52%	53%	53%

◆ California Montessori Project, Shingle Springs Campus, was authorized by Buckeye USD in 2006. This SARC does not reflect data prior to BUSD sponsorship.

## Norm Referenced Tests

Norm referenced tests (NRT) are nationally administered multiple-choice achievement tests that provide statistical feedback on a national level. The purpose of these tests is to determine how well California students are achieving academically compared to students nationally in reading, language, spelling, and mathematics in grades 3 and 7 only. The current NRT adopted by the State Board of Education is the California Achievement Test, Sixth Edition, or CAT/6. For a complete report on all subgroups and their scores by grade level, please visit <http://star.cde.ca.gov/>.

The adjacent tables show the percentage of students that scored at or above the 50th percentile (national average) in reading and math.

## NRT Subgroup Results: Reading and Math

Percentage of Students Scoring At or Above the 50th Percentile		
Subgroup	Spring 2007 Results	
	Reading	Mathematics
<b>Male</b>	64%	79%
<b>Female</b>	71%	54%
<b>Economically Disadvantaged</b>	◆	◆
<b>English Learners</b>	◆	◆
<b>Students with Disabilities</b>	64%	64%
<b>Migrant Education Services</b>	◆	◆
<b>African American</b>	◆	◆
<b>American Indian or Alaska Native</b>	◆	◆
<b>Asian</b>	◆	◆
<b>Filipino</b>	◆	◆
<b>Hispanic or Latino</b>	◆	◆
<b>Pacific Islander</b>	◆	◆
<b>White</b>	70%	70%

◆ Scores are not shown when the number of students tested is 10 or less, either because the number of students tested in this category is too small for statistical accuracy or to protect student privacy.

## California Physical Fitness Test

Each spring, all students in grades 5 and 7 are required to participate in the California Physical Fitness Test (PFT). The test measures six key fitness areas:

1. Aerobic Capacity
2. Body Composition
3. Abdominal Strength
4. Trunk Extension Strength
5. Upper Body Strength
6. Flexibility

To meet fitness standards, students must score in the Healthy Fitness Zone (HFZ) on all six fitness tests. For 2006-07, 34.1% of students in the fifth grade and 36.0% in the seventh grade scored in the HFZ. For more information on the California PFT, please visit [www.cde.ca.gov/ta/tg/pf/](http://www.cde.ca.gov/ta/tg/pf/).



## Adequate Yearly Progress

NCLB requires that all schools and districts meet Adequate Yearly Progress (AYP) requirements. To meet these standards, California public schools and districts must meet or exceed criteria in four target areas:

1. Participation rate on statewide assessments
2. Percent of students scoring proficient on statewide assessments
3. API scores
4. Graduation rate for high schools

For a detailed report on Adequate Yearly Progress, please visit [www.cde.ca.gov/ta/ac/ay/](http://www.cde.ca.gov/ta/ac/ay/).

## Academic Performance Index

The Academic Performance Index (API) is an annual measure of the academic performance and progress of schools in California. The API is a score on a scale of 200 to 1,000, with 800 set as the statewide target. Schools are ranked in ten categories of equal size from 1 (lowest) to 10 (highest). A similar schools API rank reflects how a school compares to 100 statistically matched "similar schools." The adjacent tables show the school's three-year data for API rank and API growth. For more detailed information, please visit [www.cde.ca.gov/ta/ac/ap/](http://www.cde.ca.gov/ta/ac/ap/).

**Testing Note:** Assessment data are reported only for numerically significant subgroups. Data may not appear if ethnic/racial, socio-economically disadvantaged, or other subgroups (1) contain less than 100 students with valid test scores OR (2) comprise less than 15% of the school population tested and contain less than 50 students with valid scores.

## Adequate Yearly Progress

Adequate Yearly Progress Criteria				
	CMP Shingle Springs Campus		Buckeye USD	
<b>Met Overall AYP</b>	Yes		Yes	
AYP Criteria	English-Language Arts	Mathematics	English-Language Arts	Mathematics
<b>Participation Rate</b>	Yes	Yes	Yes	Yes
<b>Percent Proficient</b>	Yes	Yes	Yes	Yes
<b>API</b>	Yes		Yes	
<b>Graduation Rate</b>	✧		✧	

✧ Not applicable. The graduation rate for AYP criteria applies to high schools.

## Academic Performance Index

API Ranks — Three Year Comparison			
	2003-04	2004-05	2005-06
<b>Statewide API Rank</b>	✧	✧	✧
<b>Similar Schools API Rank</b>	✧	✧	✧

API Growth by Student Group — Three Year Comparison				
Group	Actual API Change			2006-07 API Score
	2004-05	2005-06	2006-07	
<b>All Students at the School</b>	✧	✧	✧	854
<b>African American</b>	✧	✧	✧	■
<b>American Indian or Alaska Native</b>	✧	✧	✧	■
<b>Asian</b>	✧	✧	✧	■
<b>Filipino</b>	✧	✧	✧	■
<b>Hispanic or Latino</b>	✧	✧	✧	■
<b>Pacific Islander</b>	✧	✧	✧	■
<b>White</b>	✧	✧	✧	858
<b>Socioeconomically Disadvantaged</b>	✧	✧	✧	■
<b>English Learners</b>	✦	✧	✧	■
<b>Students with Disabilities</b>	✦	✧	✧	■

✧ California Montessori Project, Shingle Springs Campus, was authorized by Buckeye USD in 2006. This SARC does not reflect data prior to BUSD sponsorship.

✦ API scores for English learners and students with disabilities were first reported in the 05-06 API cycle.

■ Data are reported only for numerically significant subgroups.

# California Montessori Project ■ Shingle Springs Campus

## Teacher Qualifications

The table below shows information about teacher credentials and teacher qualifications. More information can be found by visiting <http://data1.cde.ca.gov/dataquest/>.

Teacher Credential Information				
	Buckeye USD	CMP Shingle Springs Campus		
Teachers	2006-07	04-05	05-06	06-07
With Full Credential	239	◆	◆	15
Without Full Credential	5	◆	◆	2
Teaching Outside Subject Area of Competence		◆	◆	0

◆ California Montessori Project, Shingle Springs Campus, was authorized by Buckeye USD in 2006. This SARC does not reflect data prior to BUSD sponsorship.

## No Child Left Behind Compliant Teachers

No Child Left Behind (NCLB) requires that all teachers of core academic subject areas be "highly qualified." In general, for a teacher to be considered highly qualified, they must have a bachelor's degree, an appropriate California teaching credential, and have demonstrated competence for each core subject he or she teaches. For more information on teacher qualifications related to NCLB, please visit [www.cde.ca.gov/nclb/sr/tq](http://www.cde.ca.gov/nclb/sr/tq).

Core Academic Courses Taught by NCLB Compliant Teachers		
	% of Classes Taught by NCLB Compliant Teachers	% of Classes Taught by Non-NCLB Compliant Teachers
CMP Shingle Springs Campus	100%	0.0%
All Schools in District	99.1%	0.9%
High-Poverty Schools in District	◆	◆
Low-Poverty Schools in District	99.1%	0.9%

◆ Information not available.

## School Support Staff

The following is a list of the support staff at the school and their full-time equivalent (FTE):

• Library Media Teacher (Librarian)	0.0	• Speech/Language/Hearing Specialist	0.6
• Library Media Services Staff (paraprofessional)	0.0	• Resource Specialist (non-teaching)	0.5
• Psychologist	0.1	• Nurse	0.0
• Social Worker	0.0	• Other (Technology Support)	0.2

## Academic Counselors

Number of Academic Counselors (FTE)	Ratio of Students Per Academic Counselor
0.0	0.0

## Parental Involvement

Parents play an active role in the California Montessori Project. Many parents exceed the required 40 hours of participation time, as they assist in the classrooms, chaperone students on field trips, and organize special school events and fundraisers. Parents are also involved in many leadership roles, including service on the Campus Advisory Council, Technology Committee, Site Improvement Committee, Fundraising Committee, and Governing Board.

For more information on how to become involved, contact Kim Zawilski, Principal, at (530) 672-3095.

## School Safety

California Montessori has a School Safety Plan and Emergency Preparedness Handbook that are reviewed every year with staff and teachers at each campus.

The CMP school-wide Safety Plan was submitted and approved as part of the 2006 Charter Petition in April 2006. Key elements of the plan include monthly drills and crisis intervention plans.

This plan is reviewed annually and was most recently reviewed, updated, and discussed with school faculty in August 2007.

"The Montessori philosophy states that a child has an innate desire to learn and produce purposeful, meaningful work."

# California Montessori Project ■ Shingle Springs Campus

## Types of Services Funded

California Montessori Project does not receive any Federal or categorical funds. The programs and supplemental services provided are Class Size Reduction (CSR) and Special Education.

Additional reading support is provided through a Read Naturally pullout program during the school day, provided by a credentialed teacher.

Our credentialed staff also offers a no-cost, after-school tutoring program targeting at-risk students.



**SARC**—The information contained herein is provided by the California Department of Education: Enrollment and Demographics, CST, NRT, API, PI, AYP, California PFT, Teacher Qualifications, and some Financial Information. For additional information on facts about California schools and districts, please visit DataQuest at <http://data1.cde.ca.gov/dataquest>. DataQuest is an online resource that provides reports for accountability, test data, enrollment, graduates, dropouts, course enrollments, staffing and data regarding English Learners.

All other information is provided by the school and the district office.

All data accurate as of March 13, 2008.

## Federal Intervention Program

Schools that receive Title I funding can enter Program Improvement (PI) if they don't reach AYP over two consecutive years in the same content area (English-language arts or mathematics) or on the same indicator (API or graduation rate). With each additional year that they don't meet AYP, they advance to the next level of intervention. For more information, please visit [www.cde.ca.gov/ta/ac/ay](http://www.cde.ca.gov/ta/ac/ay).

Federal Intervention Program		
	CMP Shingle Springs Campus	Buckeye USD
Program Improvement Status	Not In PI	Not In PI
First Year of Program Improvement	◇	◇
Year in Program Improvement	◇	◇
Number of Schools Identified for Program Improvement		0
Percent of Schools Identified for Program Improvement		0.0%

◇ Not applicable.

## Financial Information

The data displayed is from the 2005-06 school year because the most current fiscal information provided by the state is always two years behind the current school year, and one year behind most other data included in this report.

District Salary Information — Does not include benefits		
Range	Buckeye UESD	Similar Sized District
Beginning Teacher Salary	\$35,175	\$38,159
Mid-Range Teacher Salary	\$53,130	\$59,148
Highest Teacher Salary	\$70,500	\$73,514
Average Principal Salary	\$95,631	\$91,903
Superintendent Salary	\$131,000	\$132,994
% of Budget for Teacher Salaries	44.6%	41.6%
% of Budget for Administrative Salaries	5.7%	5.9%

Financial Data				
	Total Expenditures Per Pupil	Expenditures Per Pupil From Restricted Sources	Expenditures Per Pupil From Unrestricted Sources	Average Teacher Salary
CMP Shingle Springs Campus	◇	◇	◇	◇
Buckeye USD			◇	\$55,100
California			\$4,943	\$58,519
% Difference Between School and District			◇	◇
% Difference Between School and State			◇	◇

◇ Shingle Springs Campus was part of California Montessori Project's single school designation in 05-06, therefore no data is available.

PUBLISHED BY



[www.sia-us.com](http://www.sia-us.com) 800.487.9234